

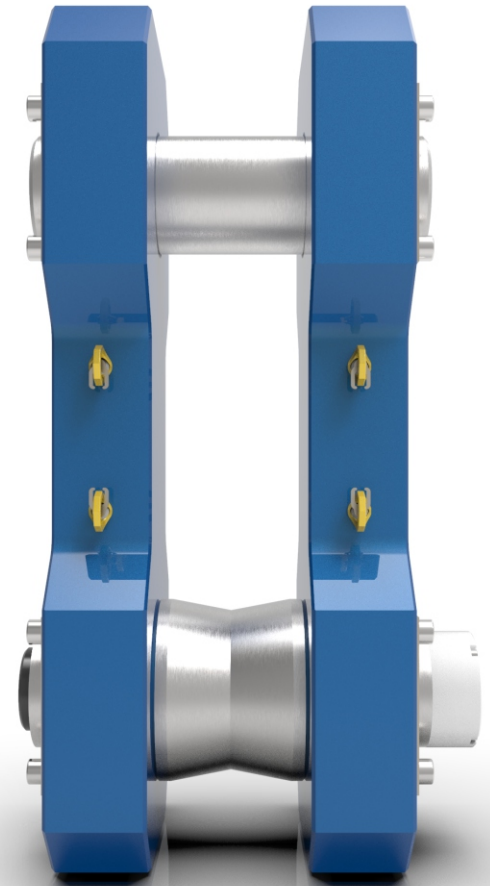
> DHL Series Load Cells

Practicality and robustness for the most diverse applications. The exclusive design of the HFN[®] DHL Load Cells allows load measurements in various situations without the use of auxiliary shackles, which makes it a specialist in high capacity and low cost.

Standard version with HFN[®] Wireless Long Range BD-2008LR transmitter

It can be supplied with other several other communication options, such as:

>> 0-10Vdc; 4-20 mA; TCP / IP; Serial RS232 / RS485 (others on request).



DHL Series load cells are perfectly engineered for the following applications:

- High capacity measurements in general
- Suspended weighing systems for industry
- Installed directly on high capacity cranes for accurate load measurement
- Maritime Industry and Oil & Gas.

Calibration certificate ISO 17025 | InMetro RBC



Wireless BD-2008 Handheld

The 2.4GHz BD-2008 displays data from the transmitters installed on both load links within up to 400m* range. The system can be powered with AA alkaline batteries or long-life lithium batteries.

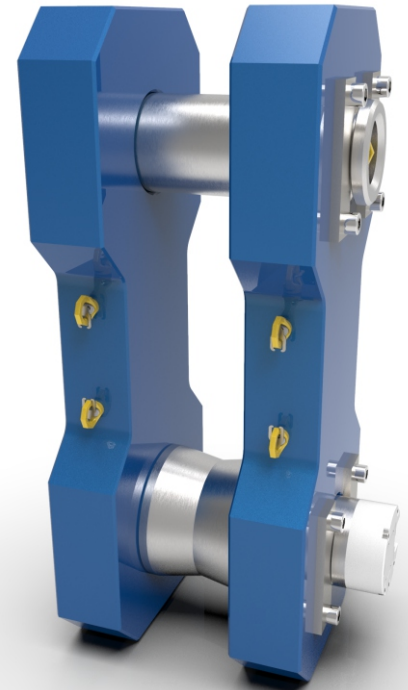
The telemetry system can be linked with tablets and industrial computers with load monitoring software

The BD-2008 system operates on the free 2.4GHz frequency and has ANATEL certification.

Specifications subject to change without notice.

The Double Link Load Cell – DHL Series from HFN Sensors is specifically designed for high tensile force measurement

- Dual-link structure: Built with two parallel arms featuring double pad-eyes, ensuring balanced force distribution and minimal bending moments — ideal for dynamic loading conditions
- Versatile top pin: Flat top pin compatible with polyester round slings, web slings, shackles with spacers for load centering, master links, and wire ropes with thimble eyes
- Load-sensing bottom pin: Equipped with an LP Series load pin and centering bushing, allowing direct connection to shackles, master links, or wire ropes with thimble eyes.



► **Specification**

Nominal Capacity	FS (t)	250 1000 (other upon request)
Accuracy Class	% FS	≤ ± 1.0
Relative linearity error	% FS	≤ ± 1.0
Relative repeatability error	% FS	≤ ± 0.25
Zero shift	% FS	≤ ± 5
Reference temperature	°C	23
Compensated temperature range	°C	-5...+70
Nominal temperature range	°C	-10...+80
Storage temperature range	°C	-20...+85
Temperat. effect on sensitivity per 10°C	%/10°C	≤ ± 0.2
Temperat. effect on zero balance per 10°C	%/10°C	≤ ± 0.2
Input resistance	Ohm	760 ± 20
Output resistance	Ohm	700 ± 20
Insulation Resistance (50V)	GOhm	> 5
Reference excitation voltage	V	5
Nominal range of excitation voltage	V	3...12
Safe load limit	% FS	200
Breaking load	% FS	> 400
Permissible dynamic load (peak to peak according to DIN50100)	% FS	70
Grau de proteção EN 60529		IP67 (IP 68 Available)

Specifications subject to change without notice.